

# TWO-SHOT PULL HANDLES

## Overmolded Thermoplastic Elastomer Rubber



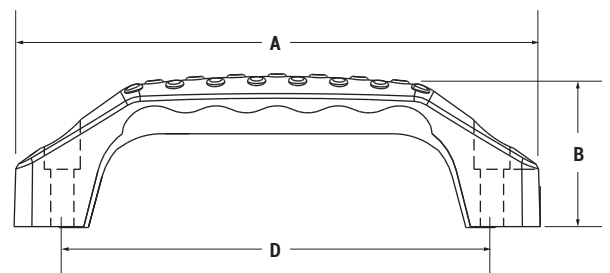
AVAILABLE IN 6 COLORS...



... AND 3 SIZES!

## FEATURES

- ▶ OUR MOST POPULAR TWO-SHOT HANDLES!  
Now available in different center to center dimensions.
- ▶ Molded with a glass reinforced Nylon substrate and an overmold Thermoplastic Elastomer rubber (TPE) to provide extra comfort and style.
- ▶ Available in a wide range of colors and center to center dimensions.
- ▶ (2) ¼" thru-holes with recess top for mounting hardware.
- ▶ Provides a non-slip comfortable grip that is durable and resistant to scratches.
- ▶ All parts are RoHS and REACH Compliant.
- ▶ [View full product offerings at www.daviesmolding.com](http://www.daviesmolding.com)



Series	Length (A)	Height (B)	Center to Center (D)	Material
4570	(5.75") 146mm	(1.68") 42mm	(4.72") 120mm	Nylon/TPE
4571	(6.71") 170mm	(2.00") 50mm	(5.51") 140mm	Nylon/TPE
4572*	(7.63") 193mm	(2.25") 57mm	(6.29") 160mm	Nylon/TPE

\*Coming Soon